

## QUICK GUIDE

Accessories



# HYDRAULIC MOTOR

Quick guide for hydraulic motor for Truck Master series

- 
- Installation positions
  - Connections
  - Rotation
  - Before start-up

## 1 Installation positions

Installation positions 1 to 4 are permissible. Positions 1 and 2 shows installation of hydraulic motor below the minimum fluid level of the reservoir (R). Positions 3 and 4 shows installation of hydraulic motor above the minimum fluid level of the reservoir (R). Positions 5 and 6 are not permitted.

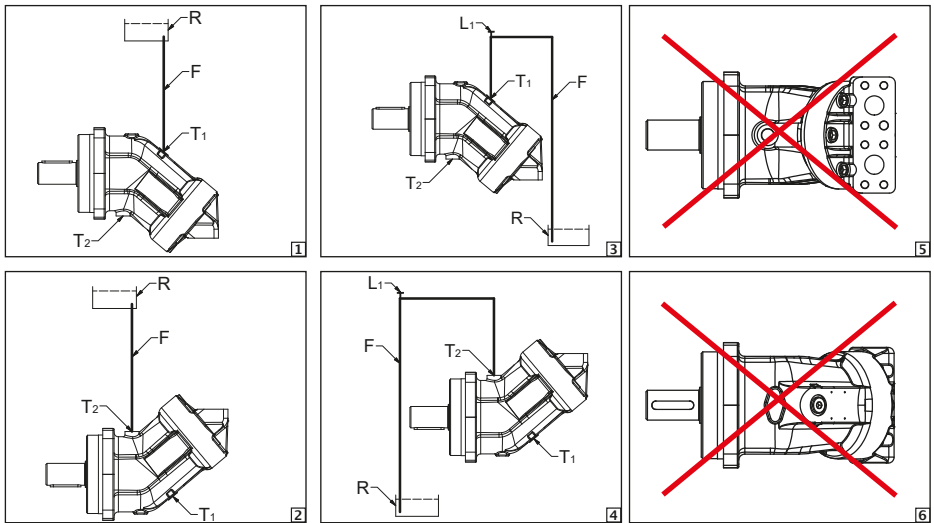
The leakage in the housing area must be directed by a drain line (F) to the reservoir (R) via the highest drain port ( $T_1$ ,  $T_2$ ). Filling/air bleeding on above-reservoir installation by port  $L_1$ , placed on highest point on drain line (F).

Important to completely drain the hydraulic motor before installation in order not to mix the internal motor oil with oil inside the installed hydraulic system.

Only use hydraulic fluids rated by Bosch Rexroth, refer to document RE 90245 (download from link below).

Further information regarding hydraulic fluids from link below:

[www.boschrexroth.com/en/xc/products/product-support/hydraulic-fluids/index](http://www.boschrexroth.com/en/xc/products/product-support/hydraulic-fluids/index)



DOC1627475\_2

## 2 Rotation

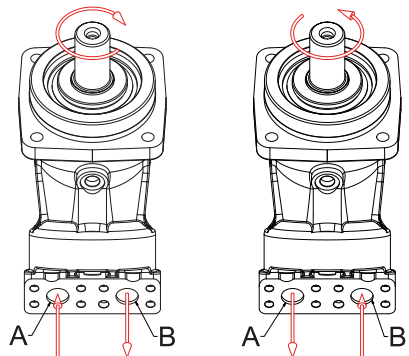
Direction of rotation and flow direction:

Clockwise rotation:           A to B

Counter-clockwise rotation:   B to A

Note:

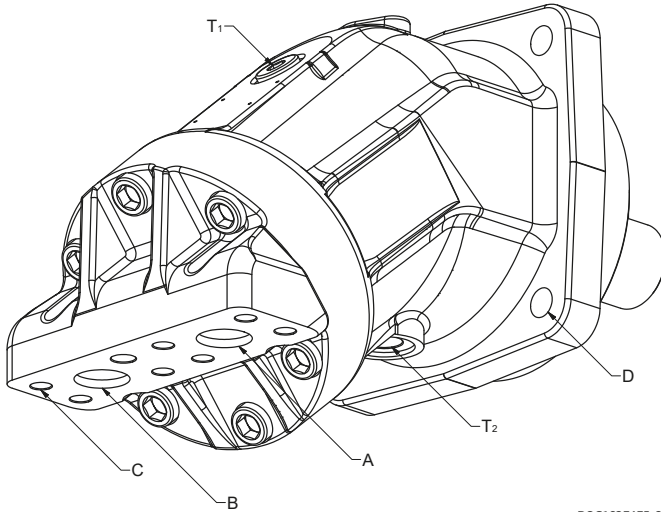
- Clockwise rotation hydraulic motor used for counter-clockwise rotation liquid ring pump!
- Counter-clockwise rotation hydraulic motor used for clockwise rotation liquid ring pump!



DOC1627475\_1

### 3 Connections and tightening torques

Make sure that the respective hydraulic motor is tightened by below given tightening torques:



DOC1627475\_3

POS	DESCRIPTION	SIZE	TIGHTENING TORQUE
T <sub>1</sub> / T <sub>2</sub>	Plug / Drain	M16	50 Nm
		M18	60 Nm
		M22	80 Nm
C	Fastening thread A / B	M8	15 Nm
		M10	30 Nm
		M12	50 Nm
		M14	80 Nm
D	Ø11	M10	45 Nm
	Ø13.5	M12	80 Nm
	Ø17.5	M16	190 Nm

### 4 Before start-up

Proceed as follows before start-up of the hydraulic motor:

- Place a drip tray under the hydraulic motor to collect any hydraulic fluid that may leak.
- The hydraulic motor must be filled with hydraulic fluid and air bled.
- Fill and air bleed the axial piston unit via the appropriate ports; see chapter „Installation positions“. Also fill the hydraulic lines of the system.

**NOTICE!** Contaminated hydraulic fluid!

The cleanliness levels of commercial hydraulic fluid are usually insufficient for Rexroth hydraulic motors. Use a suitable filter system to filter hydraulic fluids during filling to minimize solid particle contamination and water in the hydraulic system.

For additional information about the respective hydraulic motor, see [www.boschrexroth.com](http://www.boschrexroth.com)

## **SAMSON PUMPS**

Samson Pumps is the only company in the world to specialise exclusively in liquid ring vacuum pumps. Samson pumps are made in Denmark and used around the globe. We offer worldwide delivery, and we export to more than 80 countries around the world.

For over 40 years, our name has been synonymous with the strongest pumps for vacuum trucks and tankers. We constantly adapt our products to meet the changing needs of our customers. Today, it is not enough to simply produce a pump. Products must be refined so the customer can concentrate on what they do best. We therefore offer a wide range of standardised components that allow our customers to build vacuum systems without the need for specialist in-house expertise.

Strength and durability are our hallmarks! We have often heard from customers that our pumps are working in many years, and in most cases without the need for maintenance or repair. This emboldens us to say that we have the strongest program of pumps on the market.